



NC Practice Improvement Collaborative:
Stepping Up Summit!

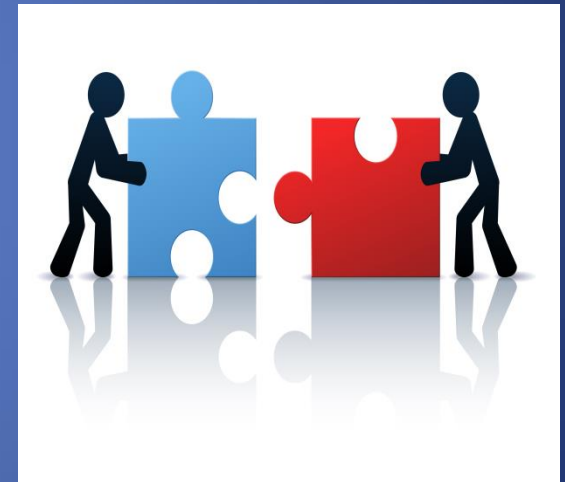
May 9, 2017

HOW
DID WE GET
HERE?

Five FIVE-WORDS

How Did We Get Here?

- Strong local community support & awareness of mental health issues & strategies
- County Commissioner support
- Sheriff's Office support
- Jail Medical expertise
- From 2000-2014 top 25 inmates entered jail over 480 times totaling > 20,000 days @ cost of \$1.5M



Timeline of Events

- April 2015 – Sheriff’s Office applied for Bureau of Justice Assistance “Justice & Mental Health Collaboration Program” grant; commonly referred to as “MH in CJ Grant”
- August 2015 - County Commissioners adopted “Stepping Up” resolution
- ***October 2015 – Awarded “MH in CJ Grant”***





Timeline of Events

- December 2015 – Members of the MH in CJ Grant Planning Team attended JMHCP/SCA Conference in Washington, DC
- April 2016 – Members of the Stepping Up Policy Team attended National Stepping Up Summit in Washington, DC
- June 2016 – Per planning team recommendation, County Commissioners appropriated funds to create a full-time Jail Navigator position

The Grant Supports the Initiative



MH in CJ Grant Outcomes

- Reduce the number of people with mental illnesses and co-occurring disorders who are booked into jail 
- Reduce the length of time people with mental illnesses and co-occurring disorders stay in jail 
- Increase the number of people released from jail who are connected to community-based services and supports 
- Reduce the number of people with mental illnesses and co-occurring disorders returning to jail 

MH in CJ Grant Activities

- Quantify the problem
- Evaluate the current system
- Accomplish a comprehensive, data-driven analysis
- Identify community resources
- Submit recommendations to Stepping Up Policy Team for implementation

MH in CJ Grant Benefits

- Technical assistance from the Council of State Governments Justice Center
- Best practices across the nation
- *Planning & Implementation Guide*
- On-site visits and reviews



Planning & Implementation Guide



Planning & Implementation Guide

1. Getting Started and Identifying Goals
2. Developing Your Collaborative Planning Team
- 3. *Jail Identification Process and Data Collection***
4. Data Driven Findings
5. County System Analysis
6. Planning to Address Gaps in the System
7. Strategic Plan
8. Ongoing Evaluation and Sustainability

Section 3: Jail Identification Process and Data Collection

- A. Local Definition of Mental Illness (MI)
- B. Jail Identification Process for MI***
- C. Local Definition of Substance Use Disorder (SUD)
- D. Jail Identification Process for Co-occurring SUD
- E. Local Definition of Recidivism
- F. Risk & Need Identification Process
- G. Connection to Community Supervision
- H. Connection to Community-Based Services

B. Jail Identification Process for MI

1. How does the jail staff determine when a possible MI and/or SUD treatment need is present?
 - Objective, standardized screening tool?
 - Who is screened and when?
 - Process in place for referral to full assessment for positive screens?
 - Data kept on # screened and assessed?

B. Jail Identification Process for MI

2. Is there a process that determines whether a person meets state/county criteria for serious or persistent MI?
Who determines?



B. Jail Identification Process for MI

3. Does your jail collect data on people who meet definition of having MI regarding:

- Length of stay?
- Status as pretrial vs. sentenced?
- Hx of prior incarceration @ the County jail?
- Hx of prior community supervision?
- Prior contact with MH providers?
- Process to track # with MI being held pretrial & # sentenced to jail?

B. Jail Identification Process for MI

4. How will you develop your baseline and future prevalence rates for people with mental illness in your jail?



Jail Navigator Position

- Work with Detention Medical Staff in identifying population (Screen/Assess)
- Research History of inmates – Collect Data (Baselines)
- Work with Jail Inmate Coordinator – Consolidate or reduce charges (Advocacy)
- Connect inmates with community resources for release (Linking/Arranging)

For More Information on Pitt County's Stepping Up Efforts

Duane Holder, Deputy County Manager

252-902-3000

duane.holder@pittcountync.gov

or

Randy Gentry, Chief Deputy

Pitt County Sheriff's Office

252-902-2660

randy.gentry@pittcountync.gov